

# Shreeji Infra.

Nr. Darshanam Vertica, Vaikuth-1, Waghodia Rd.,  
Vadodara. Ph. No.: 98250 44208, 88661 99548

Architect : **NITESH THAKKAR**

Structure : **Adstruct Consulting Eng.**

THE AMAZING LIVING LIFE STYLE !!!



**We Request :**

- 1) Possession will be given after one month of settlement of all accounts.
- 2) Documentation charges, Development charges, Stamp duty, Service tax, MGCL connection charges & common maintenance charges will be extra.
- 3) Any new central / state government taxes, if applicable shall have to be borne by the clients.
- 4) Extra work shall be executed after making full payment in advance.
- 5) Continues default in payment leads to cancellation.
- 6) Developers shall have the right to change the plan, elevation, specification or any details will be binding to all.
- 7) In case of delay in water supply, light connection, drainage work by authority, developers will not be responsible.
- 8) Refund in case of cancellation will be made with in 30 days from the date of booking of same unit by a new client, Administrative charges of 20,000/- & the amount of extra work (If any) will be deducted from refund amount.
- 9) Terrace rights & future FSI rights will be exclusively of the developers only.
- 10) The plans, specification & information of this brochure is not a legal document it is only for illustration purpose.



Q: 9998043649

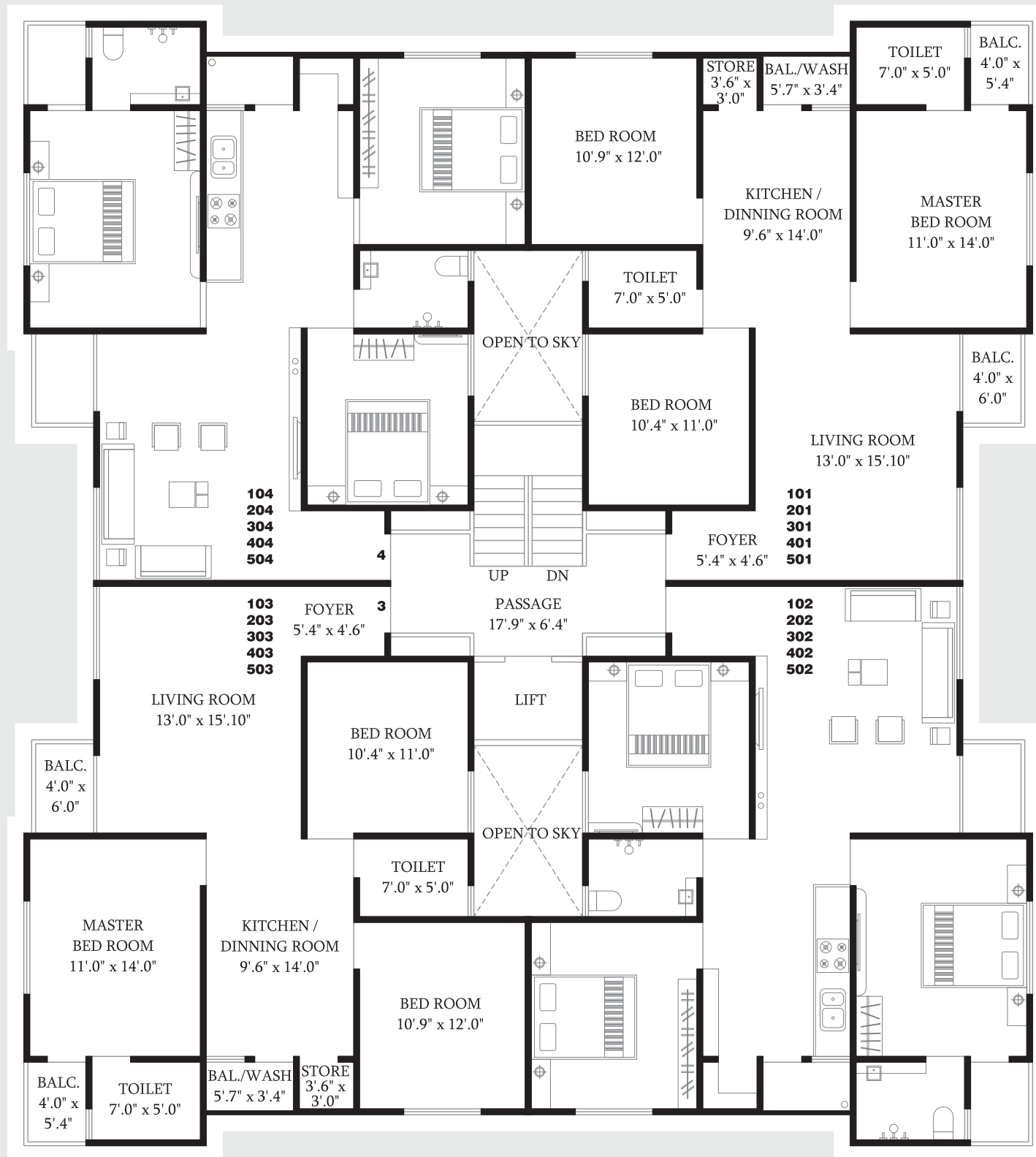


A project with delightful flats set amidst a green surroundings and a greener landscaped garden. A host of leisure amenities at the clubhouse ensure ample recreational activities.

With multiple options of planning available, you are sure to find an option suiting your distinct lifestyle needs perfectly. Whichever option you choose, you can be assured of a stellar product with quality finish and best in class material specifications. On the whole the best value for your investment.

3 BHK

TOWER - A



S.B.A. : 1500.00 Sq.Ft.

BUILT UP AREA : 1000.00 Sq.Ft.



A unique blend of form and function that combines all the advantages of a comfortable living spaces with amenities & beauty at a dream home !



# LAYOUT PLAN

TOWER - C

TOWER - B

TOWER - A

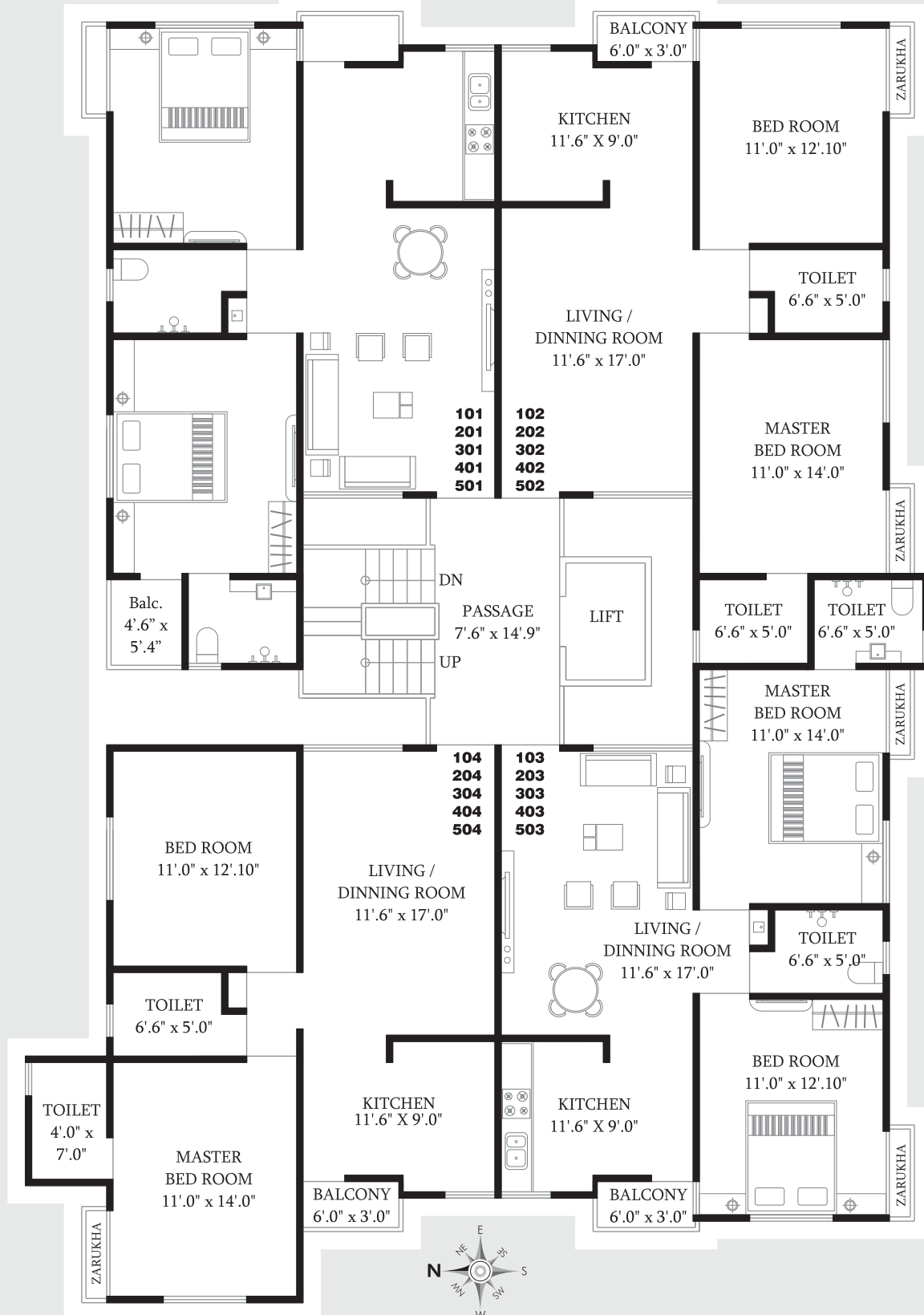
## SPECIFICATION

- STRUCTURE : All RCC & brick masonry as per structural engineer's design.
- WALL FINISH : Inside smooth plaster & exterior surface with paint.
- FLOORING : Vitrified tiles flooring in all rooms.
- PLUMBING : Internal concealed plumbing with good quality C. P. fittings.
- WINDOWS : Fully glazed aluminum powder coated windows.
- TOILETS : Ceramic tiles flooring decorative glazed tiles dedo upto lintel level.
- DOORS : Decorative main door as per architect's design with standard fittings, All internal doors made of good quality flush doors.
- KITCHEN : Granite platform with ss sink with glazed tiles dedo upto lintel level & easy access to wash.
- WATER TANK : 24hours water supply with underground and overhead tank.
- ELECTRIFICATION : Concealed copper wiring of approved quality with good quality switches separate AC points in master bedroom, (MCB & ELCB provision in main distribution board)



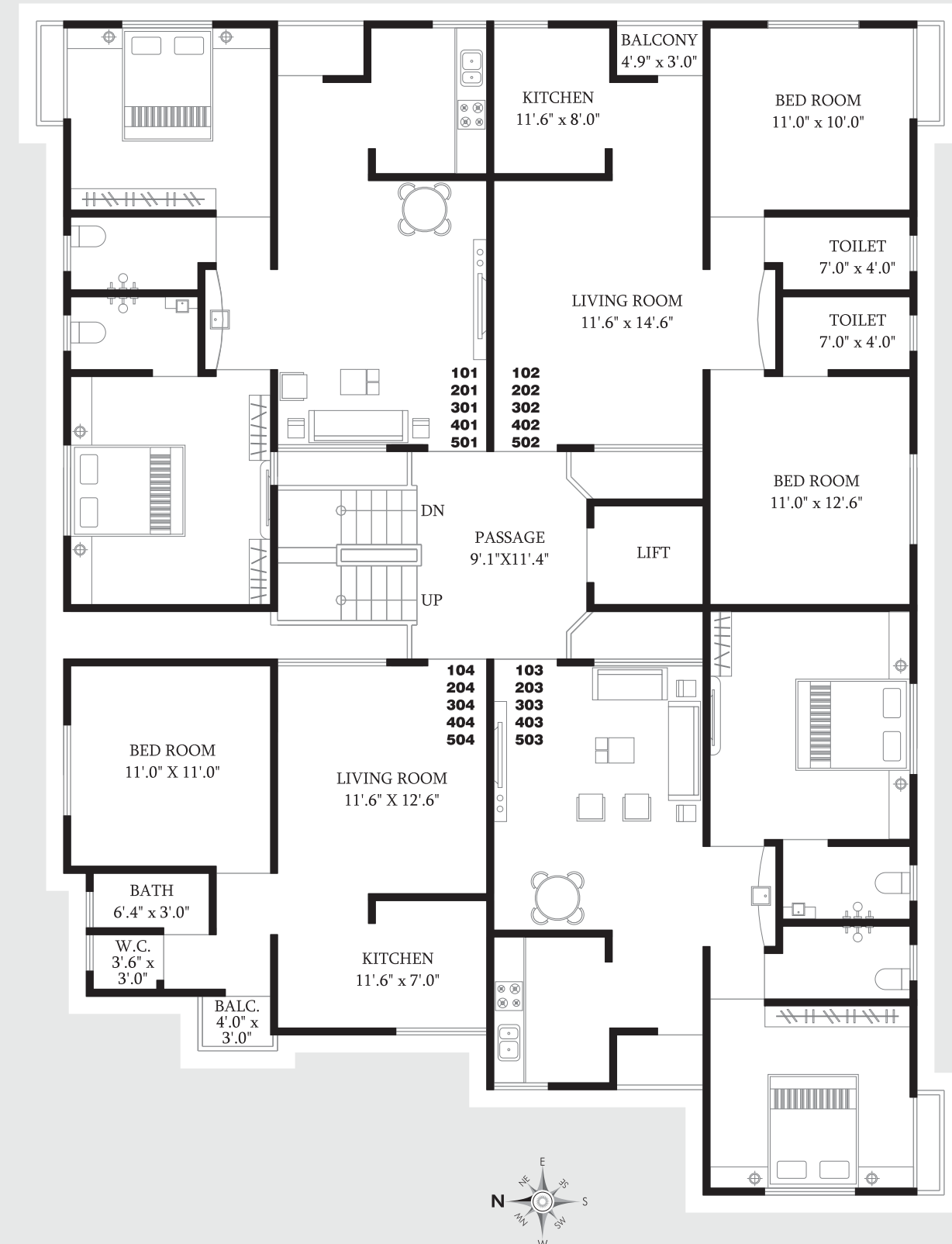
18.00 MT WIDE ROAD

## TOWER - B 2 BHK



S.B.A. : 1250.00 Sq.Ft.  
BUILT UP AREA : 860.00 Sq.Ft.

## TOWER - C 1 & 2 BHK



2 BHK S.B.A. : 1100.00 Sq.Ft.  
BUILT UP AREA : 700.00 Sq.Ft.  
1 BHK S.B.A. : 725.00 Sq.Ft.  
BUILT UP AREA : 500.00 Sq.Ft.



## AMENITIES

- Excellent wind oriented design
- Prime & Pollution free residential environment
- Well paved parking & common area
- Decorative main gate with Security Gate.
- Well Design Swimming Pool, Indoor Games, Gym., Jogging Track
- Landscape garden with children play area
- Senior Citizen Arrangement
- RO - System to each flat.
- Individual Letter Box.
- R.C.C. Road with designer lighting pole.
- Standard quality Passenger Elevator.



## PAYMENT MODES

- 30 % At the time of booking
- 10 % Plinth level
- 10 % First floor slab level
- 10 % Second floor slab level
- 10 % Third floor slab level
- 10 % Fourth floor slab level
- 10 % Fifth floor slab level
- 10 % Masonry work & Plaster Work